

ROSETTA® DIMENSIONAL FLAGSTONE



Rosetta® Dimensional Flagstone mimics an authentic, slate texture using six unique shapes and various stone textures. It's the perfect choice for walkways and elegant patios that require consistent dimensions and a more formal, sophisticated look.



Design PAVE®

PREMIUM
CONCRETE
PAVERS

ROSETTA® DIMENSIONAL FLAGSTONE

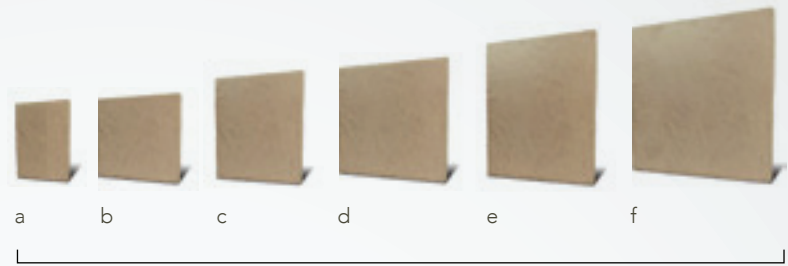


PRODUCT SPECS

- a) Rosetta® Dimensional Flagstone* – 6" x 12"
- b) Rosetta® Dimensional Flagstone* – 12" x 12"
- c) Rosetta® Dimensional Flagstone* – 12" x 18"
- d) Rosetta® Dimensional Flagstone* – 18" x 18"
- e) Rosetta® Dimensional Flagstone* – 18" x 24"
- f) Rosetta® Dimensional Flagstone* – 24" x 24"

All Dimensional Flagstone are 2" thick

All Dimensional Flagstone sold by layer, not by piece.

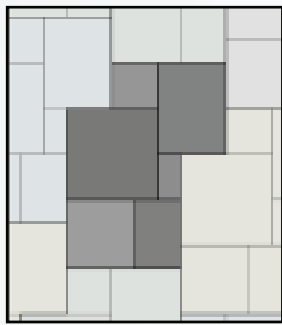


Packaged together

APPLICATIONS

Pedestrian traffic, patios, borders and swimming pool decks.

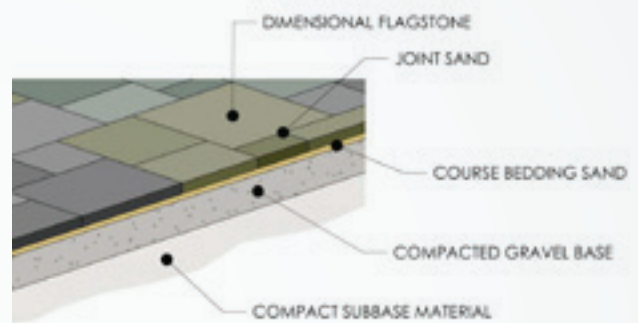
INSTALLATION PATTERNS



Patio Layout



Walkway Layout



One Layer = 1 Pattern

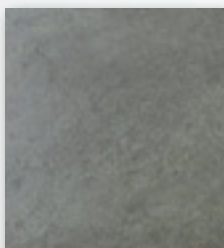
PACKAGING INFO

PRODUCT	WEIGHT PER SQ. FT.	UNITS PER SQ. FT.	LAYERS PER CUBE	UNITS PER CUBE	WEIGHT PER CUBE	SQ. FT. PER UNIT	SQ. FT. PER BAND	SQ. FT. PER CUBE	COLORS STOCKED
Dimensional Flagstone	24.0	N/A	8	48	2350	N/A	12.25	98	Bluestone, Cuyahoga, Scioto

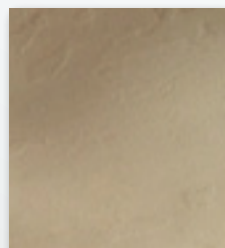
Note: Due to variations in printing, color selections should always be chosen from actual product samples. Textured paver and patio stone surfaces require a buffer between the plate compactor and the paver surface to prevent scuffing.

COLORS

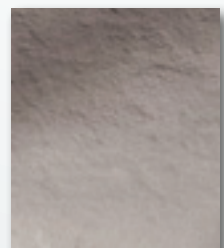
Bluestone Blend



Cuyahoga Blend



Scioto Blend



PAVERS
DesignPAVE®