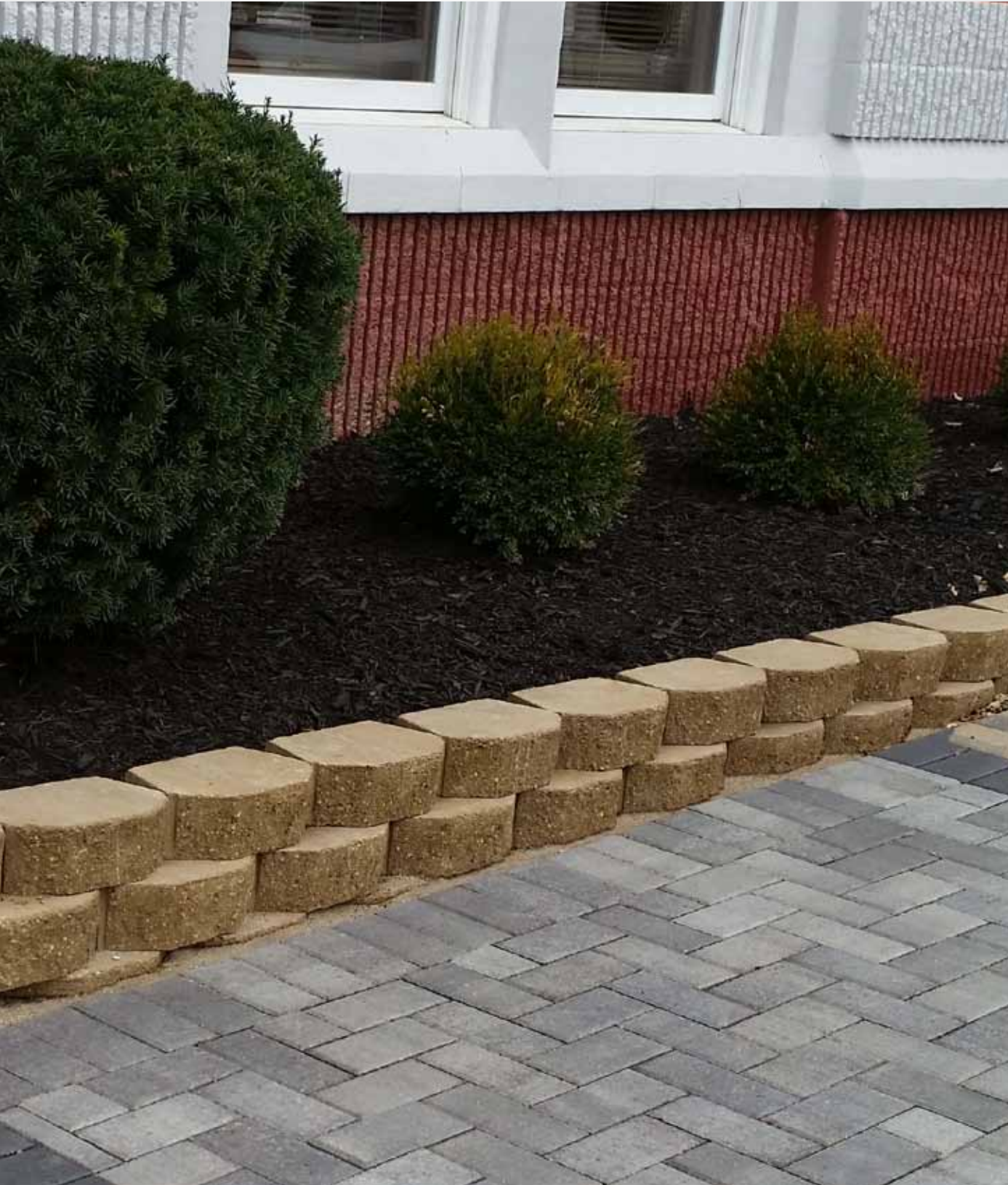


# GARDEN-STACK™ WALL



Garden-Stack™ wall units provide the easiest and most economical way to improve the look of any landscape. Perfect for small retaining walls, terraces, tree rings and planters, you will be pleased with the positive improvements even a small wall can make in your landscape design.



RETAINING WALLS

PREMIUM  
CONCRETE  
WALL  
BLOCK

# GARDEN-STACK™ WALL

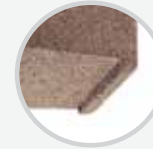


## PRODUCT SPECS

- a) **Garden-Stack™ Wall** –  
12" front x 9" rear x 9"D x 4"H
- b) **Garden-Stack™ Tri-Split Wall** –  
12" face x 8" rear x 4"H



a



Rear lip for easy alignment and proper set back



b

## APPLICATIONS

Garden walls and tree rings for residential applications.

## PACKAGING INFO

PRODUCT	WEIGHT PER SQ. FT.	UNITS PER SQ. FT.	UNITS PER BAND	UNITS PER CUBE	WEIGHT PER CUBE	SQ. FT. PER UNIT	SQ. FT. PER BAND	SQ. FT. PER CUBE	COLORS STOCKED
Garden-Stack® Wall (Straight face)	90	3.00	N/A	96	2880	0.33	N/A	32.00	Antique, Earth, Flagstone
Garden-Stack® Wall (Tri-Split)	69	3.00	N/A	96	2208	0.33	N/A	32.00	Buff, Gray

## COLORS

Antique Blend



Earth Blend



Flagstone Blend



## GARDEN STACK TRI-SPLIT WALL COLORS

Bluff Blend



Gray Blend



Due to variations in printing, color selections should always be chosen from actual product samples.