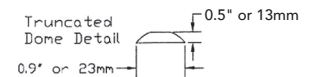
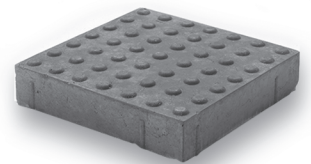
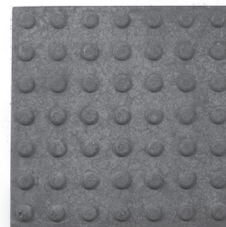


Oberfields LLC ADA Detectable Warning Pavers are manufactured in accordance to Section 705 Detectable Warnings of the Department of Justice's 2010 "ADA Standards for Accessible Design."

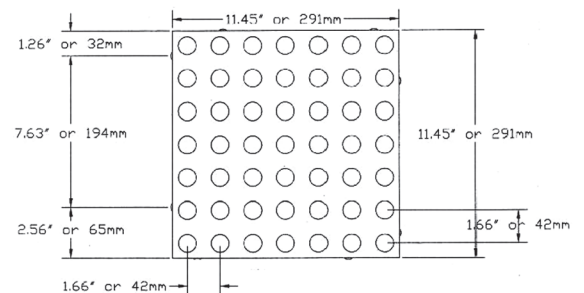
According to ADA guidelines:

- A detectable warning is a standardized surface feature, built in or applied to, walking surfaces or other elements to warn of hazards on a circulation path.
- The color of the detectable warning surface shall contrast visually with adjacent walking surfaces, either light on dark, or dark on light.

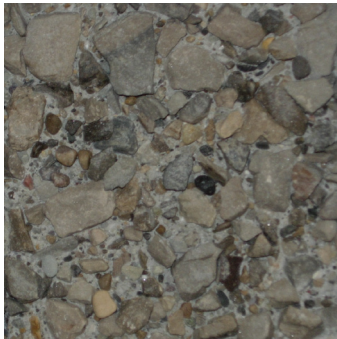


OBERFIELDS ADA Paver Characteristics

- 11 7/16" x 11 7/16" x 2 3/8" or 291mm x 291mm x 60mm
- Charcoal and Red non-stock
- Meets ADA requirements for slip resistance
- Meets ASTM C936 and ACI 530 specifications
- Truncated dome pattern is produced in parallel alignment
- Paver surface can be sandblasted for an alternative surface texture
- Size decreases installation time
- Little or no maintenance required
- Cleaning and sealing information available upon request



PRECAST CONCRETE FINISHES



Exposed Aggregate #1
Gray Crushed Limesone
3/8" Top Size



Exposed Aggregate #2
Pea Gravel
1/2" Top Size



Cuyahoga Blend



Light Sandblast Texture
Natural Concrete Color



Smooth As-Cast Surface
Natural Concrete Color



Scioto Blend



Buff
PC201



Charcoal
PC202



Light Buff
PC215

NOTES:

- Available Finishes for precast concrete products are shown and described to indicate approximate color and texture involved.
- Photographic representation of finish texture is approximately 25 percent of actual size.
- Refer to Oberfields LLC® data sheets showing specific precast concrete products to see which finishes are applicable for those products.
- All Colored Precast "PC" finishes are only available in Light Sandblast texture.