



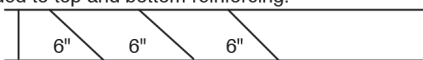
BLOCK TEXTURED LINTELS - NORMAL WEIGHT

Lintel Length	Clear Span	Nominal 4x8				Nominal 6x8				Nominal 8x8			
		All. Load (lb/ft)	Factored All. Load (lb/ft)	Rebars	Weight (lbs)	All. Load (lb/ft)	Factored All. Load (lb/ft)	Rebars	Weight (lbs)	All. Load (lb/ft)	Factored All. Load (lb/ft)	Rebars	Weight (lbs)
24" (2'-0")	8"	5438	14592	1-#3 B	54								
28" (2'-4")	12"	3983	9240		63								
32" (2'-8")	16"	2740	6367		72								
36" (3'-0")	1'-8"	1997	4650	1-#3 T 1-#3 B	81	3978	9144	1-#3 T 2-#3 B	125				
40" (3'-4")	2'-0"	1517	3505		90	3025	5962		140	3035	7102		200
48" (4'-0")	2'-8"	956	2117		108	1912	3603		167	1912	4451		235
56" (4'-8")	3'-4"	654	1533		126	1310	2610		195	1305	3098	2-#3 T 2-#3 B	283
64" (5'-4")	4'-0"	472	1126		144	949	2053		223	941	2255		318
72" (6'-0")	4'-8"	354	854		169	716	1694		262	705	1709		354
80" (6'-8")	5'-4"	274	668		180	556	1342		284	544	1336		401
88" (7'-4")	6'-0"	382	727		1-#3 T	198	764		1240	1-#3 T	307	787	1526
96" (8'-0")	6'-8"	311	643	1-#4 B	216	624	1097	2-#4 B	335	640	1350	2-#4 B	472
112" (9'-4")	8'-0"	248	515	1-#3 T 1-#5 B	252	519	880	1-#3 T 2-#5 B	392	510	1081	2-#3 T	555
120" (10'-0")	8'-0"	248	515		270	519	880		418	510	1081	2-#5 B	590
128" (10'-8")	8'-8"	210	470		288	441	804		451				
136" (11'-4")	9'-4"	257	427	1-#3 T	306								
144" (12'-0")	10'-0"	223	395	1-#6 B	324								

DENSE TEXTURED LINTELS

Lintel Length	Clear Span	Nominal 4x8			
		All. Load (lb/ft)	Factored All. Load (lb/ft)	Rebars	Weight (lbs)
136" (11'-4")	9'-4"	221	394	1-#4 T 1-#6 B	318
144" (12'-0")	10'-0"	193	366	TRUSSED	336
160" (13'-4")	11'-4"	145	316	1-#4 T 1-#7 B	374
168" (14'-0")	12'-0"	128	297	TRUSSED	392

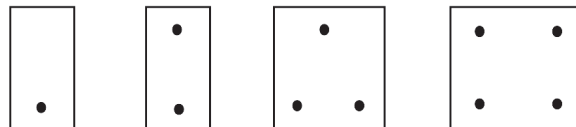
All dense concrete lintels have #3 inclined stirrups at 6" c/c welded to top and bottom reinforcing.



STRUCTURAL DESIGN NOTES:

- Loading shown is superimposed load capacity of lintel.
- Concrete compressive strength:
 - For Block Textured Lintels - $f'c = 2500$ psi
 - For Dense Textured Lintels - $f'c = 5000$ psi
- Reinforcing yield strength - $f_y = 60,000$ psi
- Design based on ACI 318-02 and NCMA TR91B
- Minimum bearing length:
 - 8" for lintels less than 10 ft
 - 12" for lintels 10 ft and longer

STEEL REBAR LOCATIONS FOR BLOCK TEXTURED LINTELS



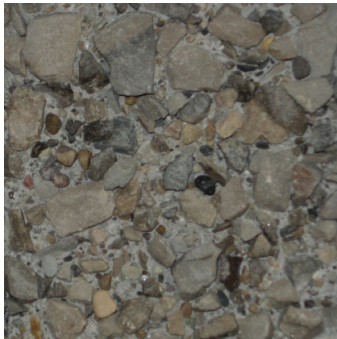
4x8 24"-32" 4x8 36"-144" 6x8 ALL SIZES 8x8 ALL SIZES

GENERAL NOTES:

*Additional sizes in dense textured concrete lintels available on SPECIAL ORDER and require a customer supplied engineered drawing before we can quote.

- 4x8 Block Texture Lintels - scored one side
- 6x8 and 8x8 Block Texture Lintels - scored two sides
- Pallet Quantity for 4x8 Lintels: In layers of 10
 - 40 for units up to 48" length
 - 20 for units over 48" length
- Pallet Quantity for 6x8 and 8x8 Lintels: In layers of 5,
 - 20 for units up to 48" length
 - 10 for units over 48" length

PRECAST CONCRETE FINISHES



Exposed Aggregate #1
Gray Crushed Limesone
3/8" Top Size



Exposed Aggregate #2
Pea Gravel
1/2" Top Size



Cuyahoga Blend



Light Sandblast Texture
Natural Concrete Color



Smooth As-Cast Surface
Natural Concrete Color



Scioto Blend



Buff
PC201



Charcoal
PC202



Light Buff
PC215

NOTES:

- Available Finishes for precast concrete products are shown and described to indicate approximate color and texture involved.
- Photographic representation of finish texture is approximately 25 percent of actual size.
- Refer to Oberfields LLC® data sheets showing specific precast concrete products to see which finishes are applicable for those products.
- All Colored Precast "PC" finishes are only available in Light Sandblast texture.