

OBERFIELDS LLC
Sales-Corporate Office
528 London Road
P.O. Box 362
Delaware, OH 43015
614-252-0955
740-369-7644
800-845-7644
Fax 740-363-7644

Sales
450 West Fair Avenue
Lancaster, OH 43130
740-653-3074
Fax 740-653-7285

**Sales & Manufacturing
Landscape & Precast**
1165 Alum Creek Road
Columbus, OH 43209
614-252-0955
Fax 614-252-5858

980 Shawnee Road
Lima, OH 45805
419-225-6761
Fax 419-225-6121

**Manufacturing
Masonry**
471 Kintner Parkway
Sunbury, OH 43074
740-965-4141
Fax 740-965-2454

4033 Alum Creek Drive
Obetz, OH 43207

912 Fostoria Street
Fostoria, OH 44830



OHIO'S LEADING MANUFACTURER,
MARKETER, AND TECHNICAL
RESOURCES FOR SUPERIOR
QUALITY CONCRETE MASONRY PRODUCTS.

WWW.OBERFIELDS.COM

DesignBLOK®

12x24 DesignBLOK®
Colossal Units
Water Table & Sill Applications



Designed with Aesthetics In Mind

Stocked Colors & Textures



Sill

Oberfields new 12x24 inch DesignBLOK® units were designed to assist architects, designers and specifiers in water table and band applications.



Water Table

Our units were designed to be a cost-effective alternative to limestone and other finishes. The units are available in split-face, smooth, and sandblasted finishes.



Buff Blend



Gray Blend

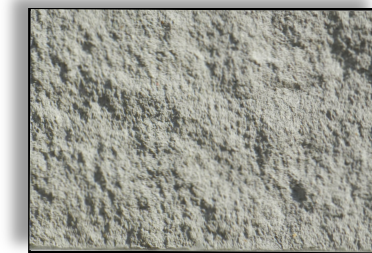
Custom colors available upon request. Minimum quantities & charges may apply.



Sandblasted



Smooth



Split-Face

ColossalBLOK®

Solid Chamfered Sills

<p>270 4" x 12" x 16" SOLID</p> <p>4" x 12" x 16" 102 x 305 x 406 UNIT WEIGHT: 50 ON PALLET 72 PER CUBE NON-STOCK</p>	<p>272 4" x 8" x 24" SOLID</p> <p>4" x 8" x 24" 102 x 203 x 610 UNIT WEIGHT: 50 ON PALLET 72 PER CUBE NON-STOCK</p>	<p>273 4" x 12" x 24" SOLID</p> <p>4" x 12" x 24" 102 x 305 x 610 UNIT WEIGHT: 80 ON PALLET 54 PER CUBE NON-STOCK</p>	<p>261 4" x 8" x 16" SOLID CHAMFERED SILL</p> <p>4" x 8" x 16" 102 x 203 x 406 UNIT WEIGHT: 28 ON PALLET 108 PER CUBE NON-STOCK</p>	<p>263 6" x 8" x 16" SOLID CHAMFERED SILL</p> <p>6" x 8" x 16" 152 x 203 x 406 UNIT WEIGHT: 47 ON PALLET 72 PER CUBE NON-STOCK</p>	<p>264 8" x 8" x 16" SOLID CHAMFERED SILL</p> <p>8" x 8" x 16" 203 x 203 x 406 UNIT WEIGHT: 64 ON PALLET 54 PER CUBE NON-STOCK</p>
<p>274 6" x 12" x 36" WATER TABLE</p> <p>6" x 12" x 36" 152 x 305 x 914 UNIT WEIGHT: 180 ON PALLET 16 PER CUBE NON-STOCK</p>	<p>275 4" x 12" x 16" SOLID SPLIT FACE</p> <p>4" x 12" x 16" 102 x 305 x 406 UNIT WEIGHT: 53 ON PALLET 72 PER CUBE NON-STOCK</p>	<p>277 4" x 8" x 24" SOLID SPLIT FACE</p> <p>4" x 8" x 24" 102 x 203 x 610 UNIT WEIGHT: 53 ON PALLET 72 PER CUBE NON-STOCK</p>	<p>266 4" x 8" x 16" SOLID CHAMFERED SILL SPLIT FACE</p> <p>4" x 8" x 16" 102 x 203 x 406 UNIT WEIGHT: 29 ON PALLET 108 PER CUBE NON-STOCK</p>	<p>268 6" x 8" x 16" SOLID CHAMFERED SILL SPLIT FACE</p> <p>6" x 8" x 16" 152 x 203 x 406 UNIT WEIGHT: 48 ON PALLET 72 PER CUBE NON-STOCK</p>	<p>269 8" x 8" x 16" SOLID CHAMFERED SILL SPLIT FACE</p> <p>8" x 8" x 16" 203 x 203 x 406 UNIT WEIGHT: 66 ON PALLET 54 PER CUBE NON-STOCK</p>
<p>278 4" x 12" x 24" SOLID SPLIT FACE</p> <p>4" x 12" x 24" 102 x 305 x 610 UNIT WEIGHT: 83 ON PALLET 54 PER CUBE NON-STOCK</p>					