



## Cost-Effective Masonry Veneers

**SPEC-BRIK  
VENEER**

Great choice for veneer wall applications

12 Color Blends

Much more cost-effective than clay brick veneer walls

Beautiful and Durable Masonry Finish

Consistent colors nationwide

Full design library

# Spec-Brik® Veneers

With Spec-Brik veneers, you have a choice of 12 complimentary standard blended colors, and custom colors are also available. These colors are made to national standards and rigorously checked to assure that you get the color you select, wherever you may be building your project.



## Applications

- Concrete masonry veneers with brick aesthetics (4" unit width) in all Climate Zones.

## Features

- Made with integral water repellent for superior moisture penetration resistance.

## Construction Efficiency

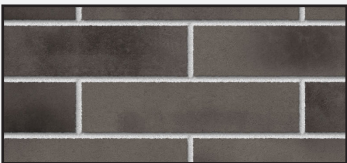
- Much more efficient and cost-effective than constructing clay brick walls with frame, masonry or other back-up walls

## Aesthetics

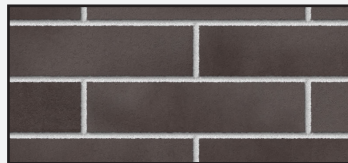
- Scale: 4"x16" face dimension
- Colors: Available in 12 standard brick blend colors; consistent nationwide.

# Spec-Brik® Colors

Spec-Brik is available in 12 Standard Colors (custom colors are also available)



Basalt Blend



Chesapeake Blend



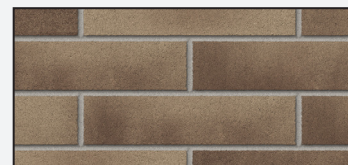
Delaware Blend



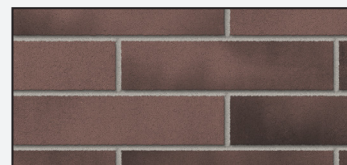
Dixon Blend



Flint Blend



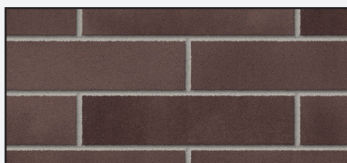
Gardner Blend



Houston Blend



Jefferson City Blend



Panama City Blend



Philadelphia Blend



St. Cloud Blend

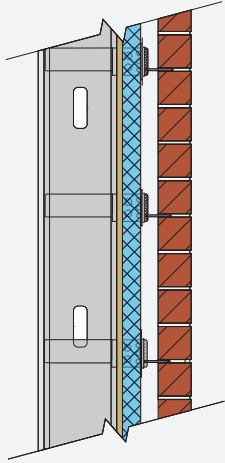


Stanton Blend

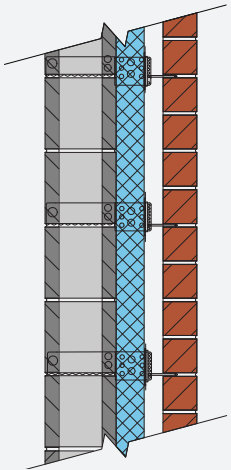
The colors above are digital renderings of blended Spec-Brik colors. Due to the limitations of the printing process and the importance of viewing masonry materials under realistic site lighting conditions, we strongly recommend viewing a sample board before making color selections and using a job site sample panel as the basis for acceptance of the final work.

# Energy Code Compliance

SPEC-BRIK Veneers are suitable for all energy climate zones when properly designed. With proper anchorage, the veneer wall system will meet structural requirements even when built with thick layers of continuous insulation, and a two-inch air gap. To provide context, up to 4 inches of insulation and a 2 inch airspace may be required in Zone 8.



Metal Frame Insulation:	Compliance Method	2012 and 2015 IECC Max Climate Zone
2" EPS rigid board R-8 (Continuous Insulation) Blanket Insulation R-13	Prescriptive R-Value Table	Zone 8 Zone 6 (Group R) Zone 8 (R) requires R-17.5ci
3" XPS rigid board R-15 (Continuous Insulation) Assembly U-Factor: 0.051	Prescriptive U-Factor Table	Zone 7 Zone 7 (Group R) Zone 8 requires U-0.045
3" XPS rigid board R-16.8 (Continuous Insulation) Assembly U-Factor: 0.047	Prescriptive U-Factor Table	Zone 7 Zone 7 (Group R) Zone 8 requires U-0.045
4" EPS Rigid Board – R-20 (Continuous Insulation) Assembly U-Factor: 0.041	Prescriptive U-Factor Table	Zone 8 Zone 8 (Group R)



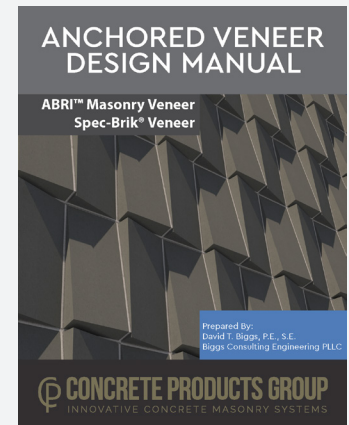
Masonry Cavity Wall 8x8x16 backup wall Insulation:	Compliance Method	2012 and 2015 IECC Max Climate Zone
3" XPS rigid board R-15 (Continuous Insulation) Assembly U-Factor: 0.053	Prescriptive U-Factor Table	Zone 7 Zone 7 (Group R) Zone 8 requires U-0.045
3" XPS rigid board R-16.8 (Continuous Insulation) Assembly U-Factor: 0.049	Prescriptive U-Factor Table	Zone 7 Zone 7 (Group R) Zone 8 requires U-0.045
4" EPS Rigid Board – R-20 (Continuous Insulation) Assembly U-Factor: 0.042	Prescriptive U-Factor Table	Zone 8 Zone 8 (Group R)

## Resources for Designers

**Samples:** please contact us at [info@concreteproductsgroup.com](mailto:info@concreteproductsgroup.com) to arrange delivery of Spec-Brik samples.

### Design Resources:

- **Color Rendering software, Masonry Designer, with Revit plug-in.** This is available for download at [www.concreteproductsgroup.com](http://www.concreteproductsgroup.com)
- **Anchored Veneer Design Manual.** The Concrete Products Group offers an Anchored Veneer Design Manual which provides Code based guidance on how to design walls using anchored veneers, including a calculator for the spacing of anchorage. If you are interested in getting a copy of this manual, please contact us at [info@concreteproductsgroup.com](mailto:info@concreteproductsgroup.com).



# Nationwide Availability

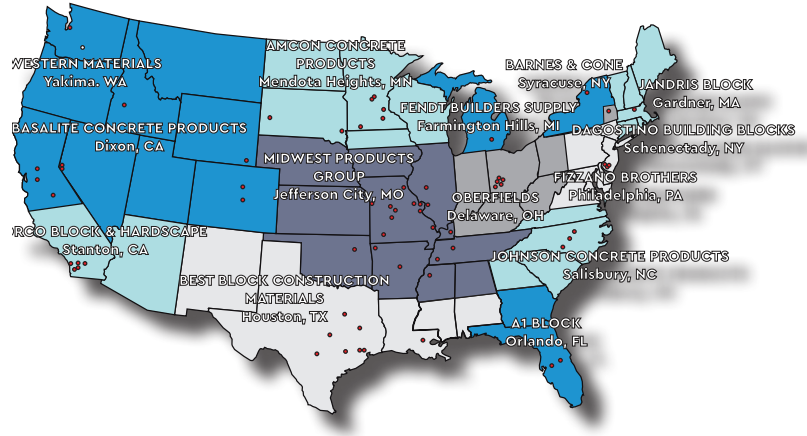
The Concrete Products Group LLC (CPG) consists of regional market leaders in the concrete products industry. CPG is organized to provide consistent, top-quality products to regional and national customers. CPG provides industry leading support and service throughout the nation.

We provide a comprehensive set of design resources to support designers, including a library of CAD Details, design notes and videos and color selection and rendering tools that are available via a Revit® plug-in.

Please contact us if we can assist with your next project.

**800-789-0872**

[www.concreteproductsgroup.com](http://www.concreteproductsgroup.com)



**A-1 BLOCK**  
1617 South  
Division Avenue  
Orlando, FL  
32805

**AMCON CONCRETE PRODUCTS, LLC**  
2025 Centre Pointe  
Blvd., Suite 300  
Mendota Heights, MN  
55120-1221

**BARNES & CONE**  
P.O. Box 280  
5894 Court St. Rd.  
Syracuse, NY  
13206-0280

**BASALITE CONCRETE PRODUCTS LLC**  
605 Industrial Way  
Dixon, CA  
95620

**BEST BLOCK**  
7620 Washington  
Ave.  
Houston, TX  
77007

**DAGOSTINO BUILDING BLOCKS, INC.**  
1111 Altamont Avenue  
Schenectady, NY  
12303

**FENDT BUILDERS SUPPLY**  
22005 Gill Rd.  
Farmington, MI  
48335

**FIZZANO BROTHERS CONCRETE PRODUCTS, INC.**  
1776 Chester Pike  
Crum Lynne, PA  
19022-1299

**JANDRIS BLOCK**  
202 High St.  
Gardner, MA  
01440

**JOHNSON CONCRETE COMPANY**  
217 Klumac Road  
Salisbury, NC  
28144

**MIDWEST PRODUCTS GROUP**  
12901 St. Charles  
Rock Rd.  
Bridgeton, MO  
63044-2485

**OBERFIELDS, LLC**  
P.O. Box 362  
528 London Rd.  
Delaware, OH  
43015

**ORCO BLOCK & HARDSCAPE**  
11100 Beach Blvd.  
Stanton, CA  
90680-0129

**WESTERN MATERIALS COMPANY**  
1202 South First Street  
Yakima, WA 98901



# CONCRETE PRODUCTS GROUP

INNOVATIVE CONCRETE MASONRY SYSTEMS



© 2020 Concrete Products Group, LLC  
All rights reserved. RD 01-08-2020