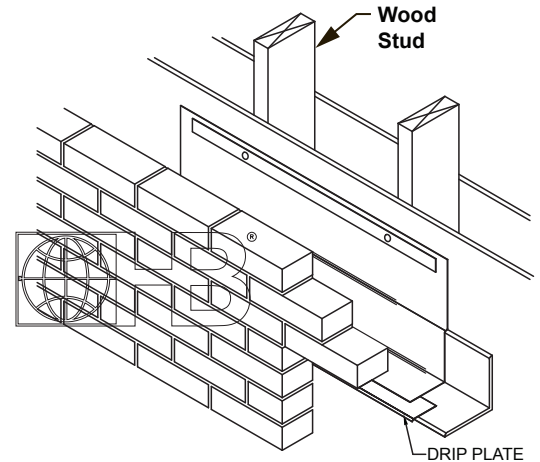


TEXTROFLASH™
Self-Adhering Flashing



DRAWINGS FOR ILLUSTRATIVE PURPOSES ONLY

Textroflash™ Flashing

Thru-Wall / Surface-Mount Flashing

An excellent choice for your next residential project, Textroflash™ 40-mil thick, non-asphalt composite membrane with a proprietary clear adhesive. This adhesive is factory-laminated to polyethylene sheeting, yielding a flexible membrane that is suitable for application to masonry, concrete, steel, gypsum, wood, and polystyrene (also for use with ICF).

- Asphalt-free composition will not drool when exposed to UV or heat.
- Corners easily formed on site. Laps easily, just press at overlap.
- Resists tearing and slicing.
- UV-resistant for up to 90 days.

Technical Data:

- COLOR - WHITE
- Tensile Strength - **ASTM D412C** 6,242 psi
- Elongation - **ASTM D412C** 16%
- Puncture Resistance - **ASTM E154** 331.8 lbs (1475.9N)
- Water Absorption - **ASTM D570** .77% maximum
- Peel Strength of Adhesive bonds - **ASTM D903** 1506 N/m (103 lbs/ft)
- Low Temperature Flexibility - **CGSB 37-GP-56M** No Cracks
- Moisture Vapor Permeation - **ASTM E96** .0152 perms

Textroflash™ Flashing:

U.S. Pat. No. 7,823,355 & 7,882,673

*** Please refer to Hohmann & Barnard installation instructions for more information.**

Width (rolls are 75 ft. long)

- 12" 16" 18" 20"
 24" 32" 36" Other _____

Stainless Steel Drip Plate

- 1 1/2" 3" Other _____

Flex-Flash® Drip Edge

- 3"

Termination Bar

- T1 Termination Bar
 Stainless Steel (Type 304) Aluminum Plastic
 T2 Termination Bar
 Stainless Steel (Type 304) Aluminum

Mastic & Primer

- HB Sealant: 1 Quart Tube HB Sealant: 2 Gallon Pail
 Primer-SA
 Water-Based Self-Adhering Flashing Primer (5 gal. pail)

NOTE: For use as surface-mount & thru-wall flashing ONLY.

IMPORTANT: Since each construction project is unique, the appropriate selection and use of any product contained herein must be determined by competent architects, engineers and other appropriate professionals who are familiar with the specific requirements of the project in question.