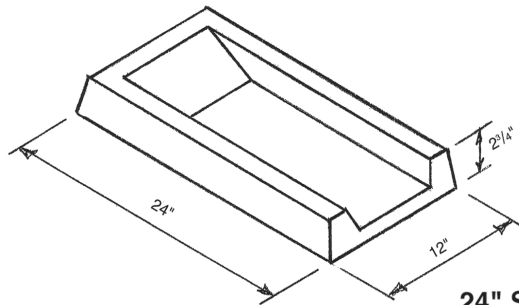
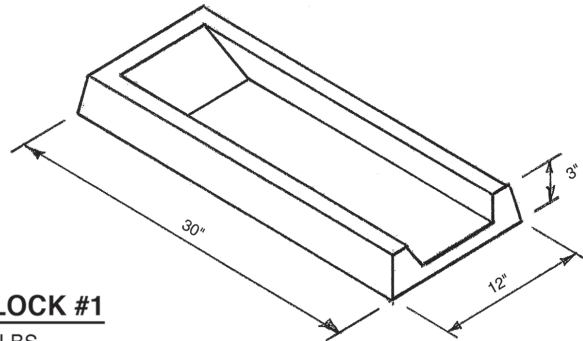


SPLASH BLOCKS



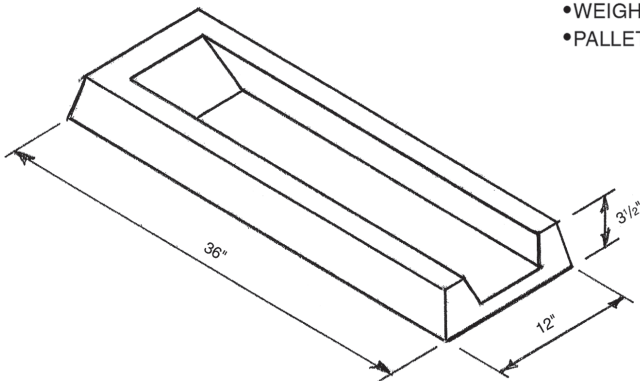
24" SPLASH BLOCK #1

- WEIGHT: 40 LBS.
- PALLET QUANTITY: 48



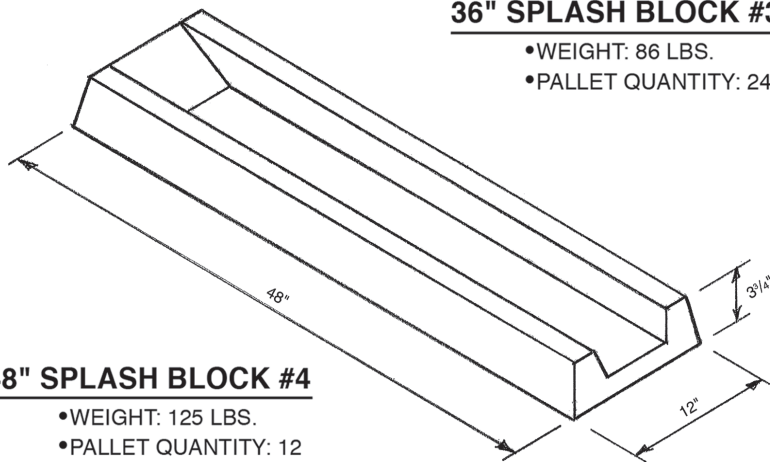
30" SPLASH BLOCK #2

- WEIGHT: 40 LBS.
- PALLET QUANTITY: 24



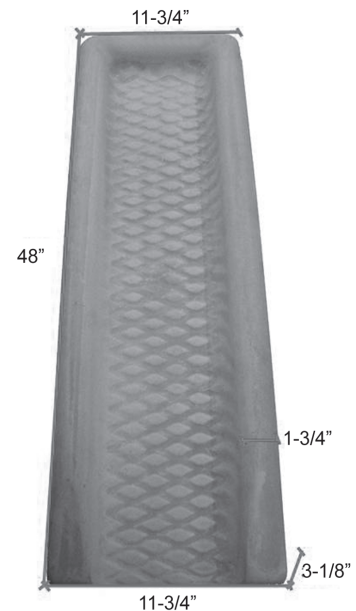
36" SPLASH BLOCK #3

- WEIGHT: 86 LBS.
- PALLET QUANTITY: 24



48" SPLASH BLOCK #4

- WEIGHT: 125 LBS.
- PALLET QUANTITY: 12



48" DIAMOND SPLASH BLOCK #5

- WEIGHT: 120 LBS.
- PALLET QUANTITY: 12

BASIC USES AND FEATURES

- For use under downspout outlet at ground level or at a roof level.
- Directs water and prevents washout under downspout outlet.
- Meets FHA standards for acceptable lengths.

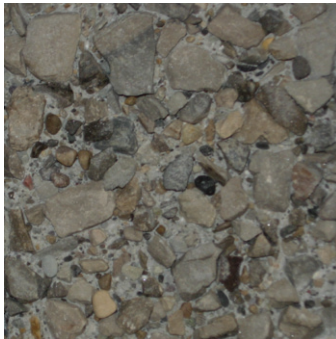
COMPOSITION & MATERIALS

- Concrete: Air entrained, achieving 5000 PSI compressive strength in 28 days.

AVAILABLE FINISH

- Smooth As-cast Surfaces, natural concrete color.

PRECAST CONCRETE FINISHES



Exposed Aggregate #1
Gray Crushed Limesone
3/8" Top Size



Exposed Aggregate #2
Pea Gravel
1/2" Top Size



Cuyahoga Blend



Light Sandblast Texture
Natural Concrete Color



Smooth As-Cast Surface
Natural Concrete Color



Scioto Blend



Buff
PC201



Charcoal
PC202



Light Buff
PC215

NOTES:

- Available Finishes for precast concrete products are shown and described to indicate approximate color and texture involved.
- Photographic representation of finish texture is approximately 25 percent of actual size.
- Refer to Oberfields LLC® data sheets showing specific precast concrete products to see which finishes are applicable for those products.
- **All Colored Precast "PC" finishes are only available in Light Sandblast texture.**