

# NON-WEATHERED VERSA-LOK<sup>®</sup>



Engineered to retain heavy loads, Versa-Lok's solid unit durability is the perfect fit. The only solid, true top-to-bottom pinned system on the market. No footings to pour, no cores to fill. One unit does it all!



RETAINING WALLS

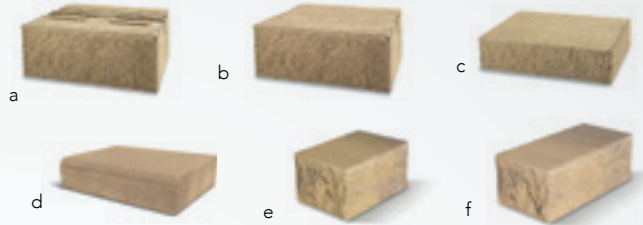
PREMIUM  
CONCRETE  
PAVERS



# NON-WEATHERED VERSA-LOK®

## PRODUCT SPECS

- a) **Versa-Lok®** – 16" (face) x 14" (rear) x 12" D x 6" H
- b) **Smooth Top Versa-Lok®** – 16" (face) x 14" (rear) x 12" D x 6" H
- c) **Rectangular Cap** – 16" (face) x 11<sup>5</sup>/<sub>8</sub>" D x 3<sup>5</sup>/<sub>8</sub>" H
- d) **Bullnose Cap** – 16" (face) x 11<sup>5</sup>/<sub>8</sub>" D x 3<sup>5</sup>/<sub>8</sub>" H
- e) **Solid Corner** – 7<sup>7</sup>/<sub>8</sub>" (face) x 12" D x 6" H
- f) **Full Return Corner** – 16" (face) x 7<sup>7</sup>/<sub>8</sub>" D x 6" H



## APPLICATIONS

Residential or commercial engineered retaining wall applications.

## PACKAGING INFO

PRODUCT	WEIGHT PER SQ. FT.	UNITS PER SQ. FT.	UNITS PER BAND	UNITS PER CUBE	WEIGHT PER CUBE	SQ. FT. PER UNIT	SQ. FT. PER BAND	SQ. FT. PER CUBE	COLORS STOCKED
Non-Weathered Versa-Lok® Standard	123	1.50	N/A	36	2952	0.667	N/A	24.00	Antique, Canyon Creek, Charcoal, Chestnut, Desert Sand, Earth, Flagstone, Granite, Gray
Non-Weathered Versa-Lok® Smooth Top Standard	123	1.50	N/A	36	2952	0.667	N/A	24.00	Antique, Canyon Creek, Charcoal, Chestnut, Desert Sand, Earth, Flagstone, Granite, Gray
Non-Weathered Rectangular Retaining Wall Cap	51	N/A	N/A	60	2880	N/A	N/A	N/A	Antique, Canyon Creek, Charcoal, Chestnut, Desert Sand, Earth, Flagstone, Granite, Gray
Non-Weathered Versa-Lok® Bullnose Cap	51	N/A	N/A	60	2880	N/A	N/A	N/A	Antique, Canyon Creek, Charcoal, Chestnut, Desert Sand, Earth, Flagstone, Granite, Gray
Non-Weathered Versa-Lok® Solid Corner	41	3.00	N/A	72	2952	N/A	N/A	N/A	Antique, Canyon Creek, Charcoal, Chestnut, Desert Sand, Earth, Flagstone, Granite, Gray
Non-Weathered Versa-Lok® Full Return Corner	48	N/A	N/A	54	2592	N/A	N/A	N/A	Antique, Canyon Creek, Charcoal, Chestnut, Desert Sand, Earth, Flagstone, Granite, Gray

## COLORS

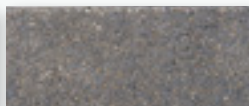
Antique Blend



Canyon Creek Blend



Charcoal



Chestnut Blend



Desert Sand Blend



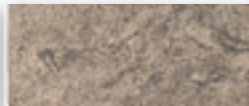
Earth Blend



Flagstone Blend



Granite Blend



Gray Blend



Due to variations in printing, color selections should always be chosen from actual product samples.