

# VERSA-LOK<sup>®</sup> SQUARE FOOT



Square Foot is a premium cored unit that covers a full square foot of wall face economically, making it a low-cost alternative for some commercial applications. Its trapezoidal shape and top-pinning system allow for variable bond construction, accurate alignment, tighter vertical joints and easy installation. Square Foot's unique design enables a near-vertical setback, and its thick face affords greater durability than other cored systems.



RETAINING WALLS

PREMIUM  
CONCRETE  
WALL  
BLOCK

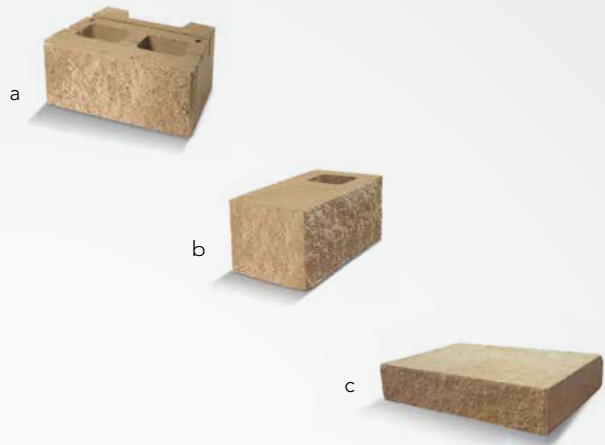


# VERSA-LOK® SQUARE FOOT

**RETAINING WALLS**

## PRODUCT SPECS

- a) **Versa-Lok® Square Foot** – 18" (face) x 14" (rear) x 12"D x 8"H
- b) **Square Foot Corner** – 18" (face) x 9"D x 8"H
- c) **18" Retaining Wall Cap** – 18" (face) x 11<sup>5</sup>/<sub>8</sub>"D x 3<sup>5</sup>/<sub>8</sub>"H



## APPLICATIONS

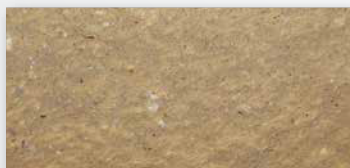
Residential or Commercial,  
engineered retaining wall applications

## PACKAGING INFO

PRODUCT	WEIGHT PER SQ. FT.	UNITS PER SQ. FT.	UNITS PER BAND	UNITS PER CUBE	WEIGHT PER CUBE	SQ. FT. PER UNIT	SQ. FT. PER BAND	SQ. FT. PER CUBE	COLORS STOCKED
Versa-Lok® Square Foot	87	1.00	N/A	36	3132	1.00	N/A	36.00	Desert Sand, Gray
Square Foot Corner	85	1.00	N/A	36	3060	1.00	N/A	36.00	Desert Sand, Gray
18" Retaining Wall Cap	128	2.19	N/A	40	2336	0.456	N/A	18.24	Desert Sand, Gray

## COLORS

**Desert Sand**



**Gray**



Due to variations in printing, color selections should always be chosen from actual product samples.