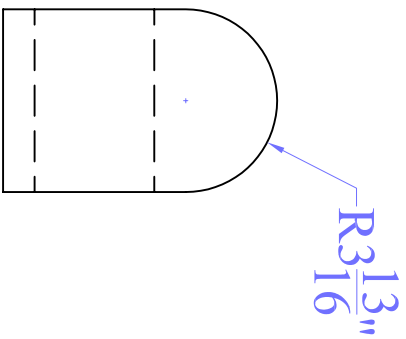
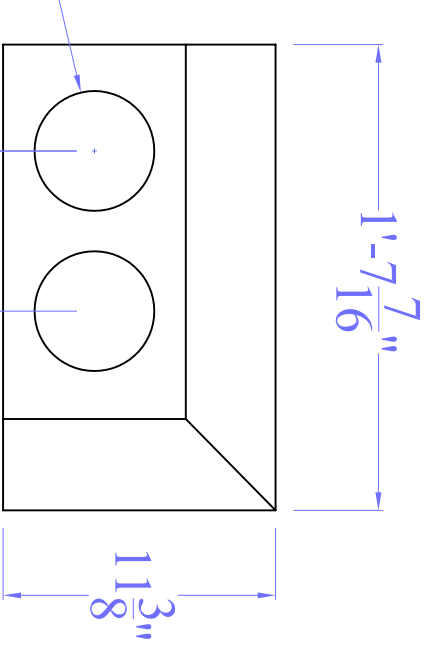
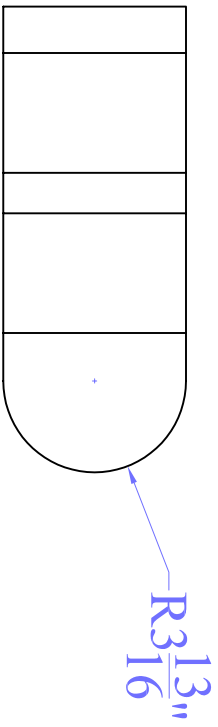
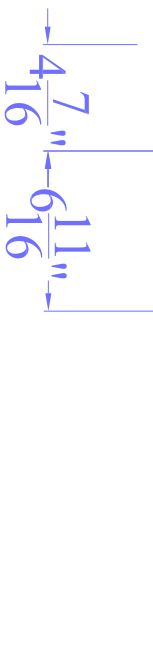


Type: Coping  
 Width:  $7\frac{5}{8}$ "  
 Height:  $11\frac{3}{16}$ "  
 Length:  $19\frac{7}{16}$ "  
 Number of Molds Available: 2



(2) Through Holes  $2\frac{1}{2}$ "



Item Number:  
OPC8W1H19L1  
 Mold Number:  
C-484



No.	Revision/Phase	Date

**Oberfield's Precast**  
 Oberfield's, INC  
 1165 Alum Creek Dr.  
 Columbus, OH 43209  
 800-845-7644

Oberfield Precast  
 Concrete

Part	11-28-05	
Scale	$1\frac{1}{8}'' = 1'-0''$	